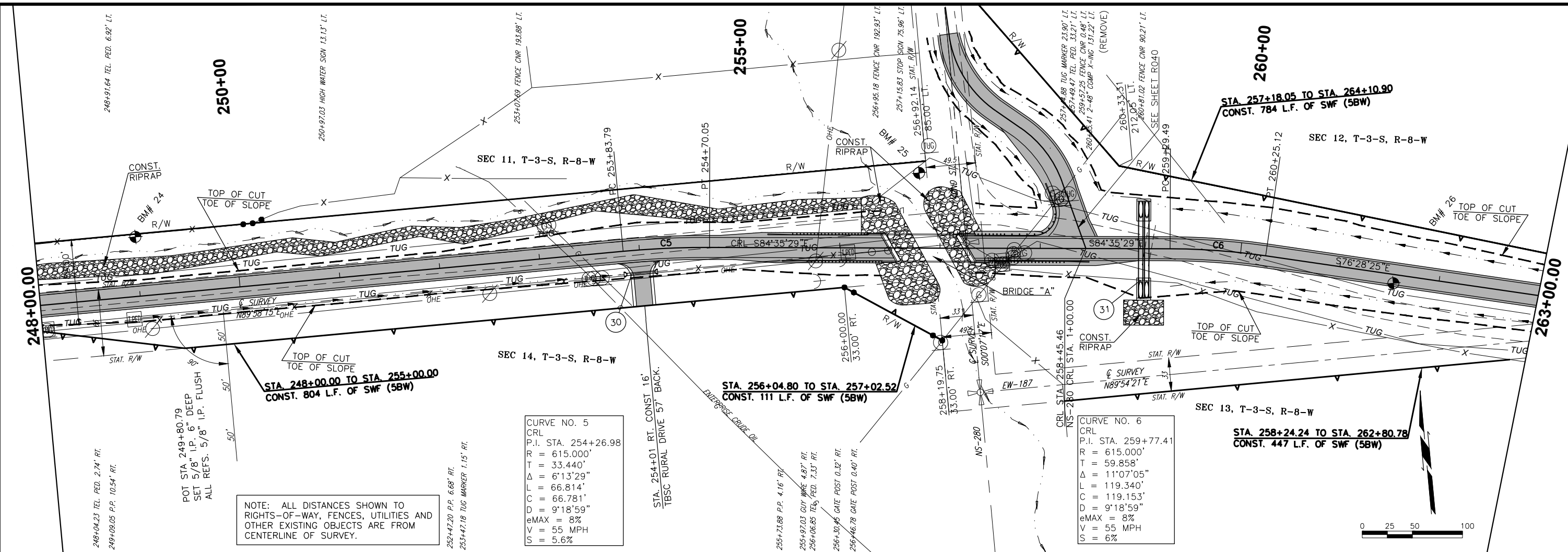


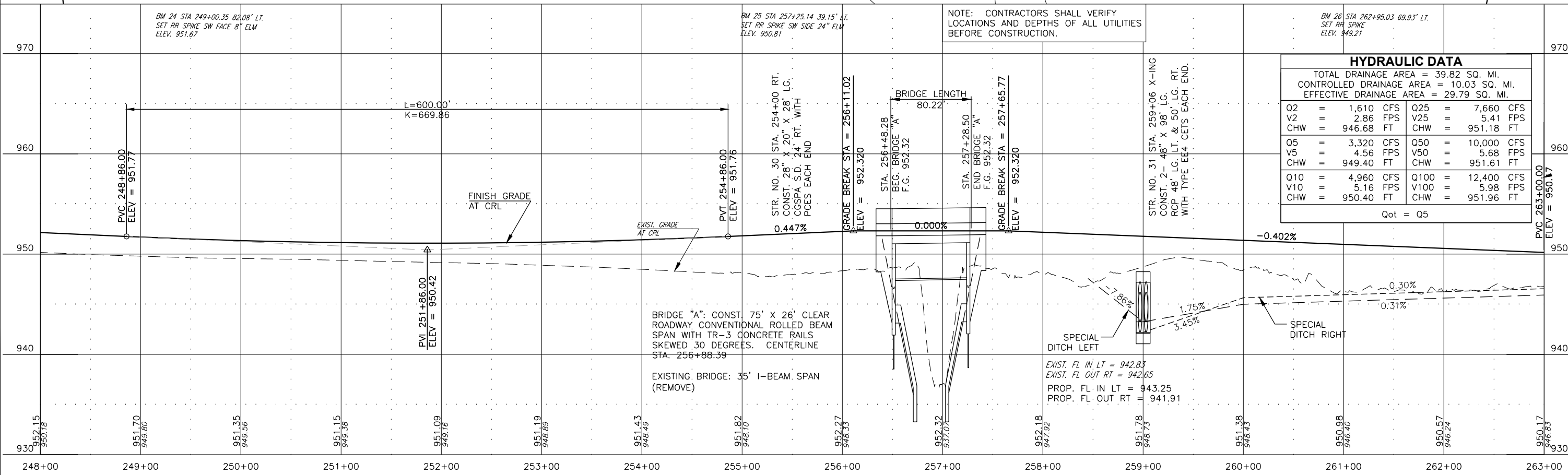
PLOT DATE: August 8, 2017, DRAWING NAME: N:\LOCAL\TRANSPORTATION\COUNTY\PRODUCTION\STEPHENS\2010\10-197\STEPHENS\PROJECT DRAWINGS\PLAN AND PROFILE 187.DWG



NOTE: ALL DISTANCES SHOWN TO RIGHTS-OF-WAY, FENCES, UTILITIES AND OTHER EXISTING OBJECTS ARE FROM CENTERLINE OF SURVEY.

CURVE NO. 5
 CRL
 P.I. STA. 254+26.98
 R = 615.000'
 T = 33.440'
 Δ = 6°13'29"
 L = 66.814'
 C = 66.781'
 D = 9°18'59"
 eMAX = 8%
 V = 55 MPH
 S = 5.6%

CURVE NO. 6
 CRL
 P.I. STA. 259+77.41
 R = 615.000'
 T = 59.858'
 Δ = 11°07'05"
 L = 119.340'
 C = 119.153'
 D = 9°18'59"
 eMAX = 8%
 V = 55 MPH
 S = 6%



HYDRAULIC DATA			
TOTAL DRAINAGE AREA = 39.82 SQ. MI.			
CONTROLLED DRAINAGE AREA = 10.03 SQ. MI.			
EFFECTIVE DRAINAGE AREA = 29.79 SQ. MI.			
Q2 =	1,610 CFS	Q25 =	7,660 CFS
V2 =	2.86 FPS	V25 =	5.41 FPS
CHW =	946.68 FT	CHW =	951.18 FT
Q5 =	3,320 CFS	Q50 =	10,000 CFS
V5 =	4.56 FPS	V50 =	5.68 FPS
CHW =	949.40 FT	CHW =	951.61 FT
Q10 =	4,960 CFS	Q100 =	12,400 CFS
V10 =	5.16 FPS	V100 =	5.98 FPS
CHW =	950.40 FT	CHW =	951.96 FT
Qot = Q5			